

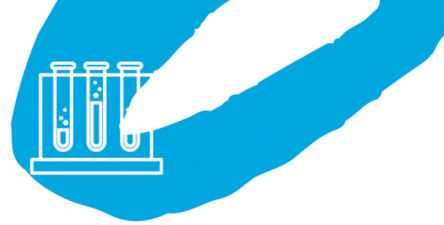
POLIMAXX
MAKE GREATER THINGS

MEDICAL GRADE

POLYPROPYLENE
RANDOM
COPOLYMER



MEDICAL GRADE



Our medical grades Polypropylene random Copolymer are designed for medical device and medical Involves applications.

This resin products are certified under international standards of raw material such as US FDA 21 CFR 177.1520, Commission Regulation (EU) NO. 10/2011, RoHS and REACH.

This resin products are also certified under medical certificate of European Pharmacopoeia 3.1.6 and USP Class VI.



DESCRIPTION

Medical Grade

Polypropylene Random Copolymer



Injection



K4510ET

- High clarity and high gloss
- No optical brightener
- Odorless
- Ethylene Oxide/ Autoclave sterilization compatibility



K4527ET

- High clarity and high gloss
- No optical brightener
- Odorless
- Ethylene Oxide/Autoclave sterilization compatibility



K4527GR

- High clarity and high gloss
- No optical brightener
- Odorless
- Ethylene Oxide/ Autoclave sterilization compatibility
- Gamma ray sterilization compatibility

Blow Molding

3340HMD

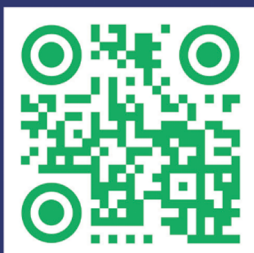
- High impact resistance
- High clarity and high gloss
- No optical brightener
- Odorless
- Ethylene Oxide/Autoclave sterilization compatibility



PROPERTIES & APPLICATIONS

MEDICAL GRADE POLYPROPYLENE RANDOM COPOLYMER

TYPICAL PROPERTIES	Test method	Unit	K4510ET	K4527ET	K4527GR	3340HMD
MELT FLOW RATE (2.16 kg at 230°C)	ASTM D1238	g/10 min	10	27	27	2
DENSITY	ASTM D792	g/cm ³	0.90	0.90	0.90	0.90
TENSILE STRENGTH AT YIELD	ASTM D638	MPa	30	30	30	27
Izod Notched Impact Strength (at 23°C)	ASTM D256	J/m	70	50	50	250
FLEXURAL MODULUS	ASTM D790	MPa	1150	1150	1150	850
HEAT DISTORTION TEMPERATURE (0.455 MPa)	ASTM D648	°C	85	80	80	83
TYPICAL APPLICATION			- Medical devices - Syringes - Babybottle - IV bottle (ISBM)	- Medical devices - Syringes - Labwares	- Medical devices - Syringes - Labwares	- IV bottle - Saline bottle - Medical bottle



IRPC

IRPC Public Company Limited
555/2 Energy Complex Building B, 6th Vibhavadi-Rangsit Rd.,
Kwaeng Chatuchak, Khet Chatuchak Bangkok 10900 Thailand